



**SEAWORTHY  
INSPECTIONS**



## Boat Condition Overview

# BAO - Boat Condition Overview

3630

**Complete**

**Site conducted**

75 Prestige Parade, Wangara WA  
6065, Australia  
(-31.7900437, 115.8462288)

**Date of PACR**

18.09.2024 11:22 AEST

**SWI Reference Number**

3630

**Location**

Power and Sail Wangara WA

**Vessel Type**

Power Vessel

**Vessel Year**

2013

**Vessel Make and Model**

Zodiac Pro 550



Photo 1



Photo 2

**Vessel Hull Identification Number (HIN)**

FR-XDC25A84K213

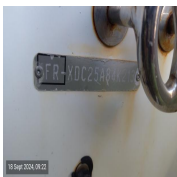


Photo 3

**Vessel Registration Number**

08883



Photo 4

**Engine Make and Model**

Suzuki 70hp 4-Stroke



Photo 5



Photo 6

---

**Port/Main Engine Serial Number**

310519



Photo 7

---

**Photos as found**



Photo 8



Photo 9



Photo 10



Photo 11

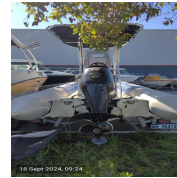


Photo 12



Photo 13

## HULL OBSERVATIONS

Construction Material

Fibreglass (GRP)

### Main Floor/Deck

Inspected

Satisfactory

Main deck is solid.



Photo 14



Photo 15



Photo 16



Photo 17



Photo 18

### Side and Bow Decks

Inspected

Satisfactory



Photo 19

### Seating and Trimming

Inspected

Satisfactory

Staining present on helm seat cushion.



Photo 20

### Fuel Tanks, Fillers, Filters and Hoses

Inspected

Fair

Fuel lines are perishing - recommend replacement.  
Fuel overflow drains directly overboard.  
Pre-fuel filter present and in good order.  
Tank appears fine in accessible areas.



Photo 21

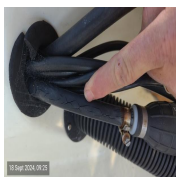


Photo 22



Photo 23



Photo 24



Photo 25



Photo 26



Photo 27



Photo 28

### Corrosion or Electrolysis

Not Applicable

### Windscreen and Wipers

Inspected

Satisfactory



Photo 29

### Bimini and Clears

Inspected

Satisfactory

Aluminium T-Top bimini fitted and is stable/solid.



Photo 30



Photo 31



Photo 32

### Sea Cocks, Skin Fittings and Hull Penetrations

Inspected

Satisfactory



Photo 33



Photo 34

### Doors, Windows, Lockers and Hatches

Inspected

Satisfactory



Photo 35



Photo 36



## Rub Strip / Rails

Inspected

Satisfactory

Rubrails along tubes are worn but in good overall condition.



Photo 37



Photo 38



Photo 39

## Hull Condition Above Waterline

Inspected

Satisfactory

Inflatable tubes are in good order.  
Former repair present PORT MIDSHIP.  
Glue on Hypalon strip giving way PORT AFT.



Photo 40



Photo 41



Photo 42



Photo 43



Photo 44



Photo 45



Photo 46



Photo 47

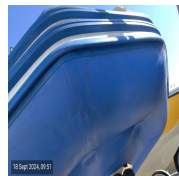


Photo 48



Photo 49



Photo 50



Photo 51



Photo 52



Photo 53



Photo 54



Photo 55



Photo 56



Photo 57

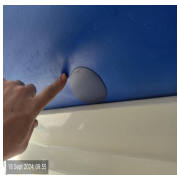


Photo 58

## Hull Condition Below Waterline

Inspected

Satisfactory

Minor scratches and former semi-professional gelcoat repairs evident on underwater areas of hull.  
Moisture results are low.



Photo 59



Photo 60



Photo 61



Photo 62



Photo 63



Photo 64



Photo 65

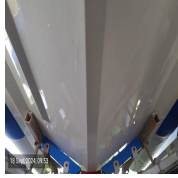


Photo 66



Photo 67



Photo 68



Photo 69



Photo 70



Photo 71



Photo 72

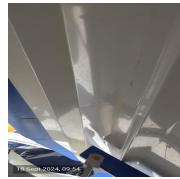


Photo 73

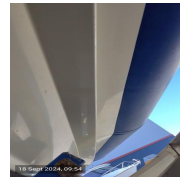


Photo 74

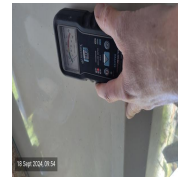


Photo 75

### Swim Platform & Ladder

Not Applicable

### Transom Condition

Inspected

Satisfactory

Transom appears in good condition and solid.



Photo 76



Photo 77



Photo 78

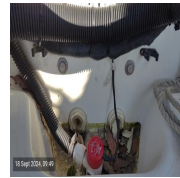


Photo 79



Photo 80



Photo 81

### Images and Video

\*

## ENGINE OBSERVATIONS

Port/Main Engine Hours

913 hours



Photo 82

Compression Testing Conducted

Yes

Manual or Electronic Testing

Manual Compression Test



Photo 83

Cylinder Compressions (In Order)

All compressions are within 20% highest to lowest.

- 1 198
- 2 172
- 3 195
- 4 214



Photo 84



Photo 85



Photo 86



Photo 87

Engine Controls

Inspected

Tested

Satisfactory

Gear control lever working fine.  
Emergency shut-off switch requires adjustment - not working properly.



Photo 88



Photo 89

Engine Indication

Tested

Satisfactory





Photo 90



Photo 91

### Engine Oil Visual Inspection

Inspected

Satisfactory

Oil condition and level is good.



Photo 92

### Trim Tabs / Planing / Stabiliser Systems

Not Applicable

### Engine Cooling System / Tell Tails

Tested

Satisfactory

Cooling water present during run test.  
No temperature alarms noted during inspection.



Photo 93

### Engine Bay Ventilation (Inboards)

Not Applicable

### Gearcase Condition

Inspected

Satisfactory



Photo 94



Photo 95



Photo 96



Photo 97

### Gearbox Operation

Tested

Satisfactory

Gearbox is shifting well throughout gear range.

## Trim and Tilt Operation and Indication

Tested

Satisfactory

Tilt motor working fine - full range UP and DOWN.



Photo 98



Photo 99



Photo 100

## Steering Type

Hydraulic

## Steering and Rudder System

Tested

Satisfactory

Steering working well - full range LEFT and RIGHT.



Photo 101



Photo 102



Photo 103



Photo 104

## Propeller

Inspected

Fair

3-blade aluminium propeller fitted - some damage evident on tips of blades, minor. Shaft tested straight.



Photo 105



Photo 106



Photo 107

## Engine Mounts

Inspected

Satisfactory

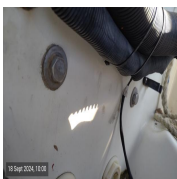


Photo 108

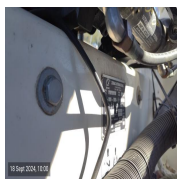


Photo 109



Photo 110



Photo 111

## Functional Test Observations

Engine running well during inspection.

## Leaks and Salt Residue

Inspected

Satisfactory

No current or former leaks evident during testing process.

## Bow Thrusters

Not Applicable

## Engine Images and Video

Satisfactory



Photo 112



Photo 113



Photo 114



Photo 115



Photo 116

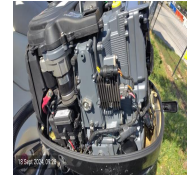


Photo 117



Photo 118

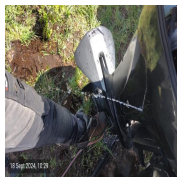


Photo 119

[32296731-6243-47d2-bd8e-673bd71d41d0.mp4](#)

[d2343712-aedf-4fe9-a2b3-1fb240e79181.mp4](#)

[621960d9-afc6-4046-b6e8-472c86b9a958.mp4](#)

## ELECTRICAL SYSTEMS OBSERVATIONS

### Batteries Fitted

1 x BOSCH 750CCA battery fitted.



Photo 120

### Batteries Tested

Yes

Battery tested as GOOD/RECHARGE.



Photo 121

### Batteries Adequately Secured

No

Battery is contained but not secured down.



Photo 122

### Battery Chargers / Solar systems / Shore Power / Generators

Not Applicable

### Battery Isolaters and Breakers

Tested

Satisfactory



Photo 123

### Boat System Instruments

Satisfactory



Photo 124



## Navigation Lights

Tested

Satisfactory



Photo 125



Photo 126



Photo 127

## Electrical Wiring Looms and Distribution

Inspected

Satisfactory

Basic and functional.

Wiring is messy in places and would benefit from cable management.

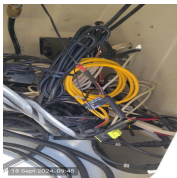


Photo 128



Photo 129



Photo 130

## Bilge Pumps and Float Switches

Tested

Satisfactory



Photo 131

## Navigational Equipment

Inspected

Mount present at helm for chart plotter - not present during inspection.

2 x transom mounted transducers fitted - PORT transducer mount is bent.

Magnetic compass fitted.



Photo 132



Photo 133



Photo 134



Photo 135



Photo 136



Photo 137

## Additional Comfort Items Present

### Cabin and Deck Lighting



FWD spotlight fitted - working.



Photo 138

---

## ONBOARD EQUIPMENT

### Anchor / Chain / Rope

Inspected

Satisfactory

Sand anchor stored in FWD hatch.  
Chain and rope are spiced well.  
Rope bitter end tied off to bow eye.  
FWD bollard present and solid.



Photo 139

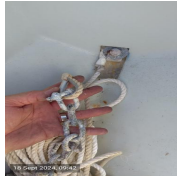


Photo 140



Photo 141



Photo 142



Photo 143

### Electric Winch

Not Applicable

### VHF Radio

Tested

Satisfactory

SIMRAD VHF radio fitted - working.  
GME 27Meg marine radio fitted - working.



Photo 144



Photo 145



Photo 146



Photo 147

### EPIRB

Not Present

### Horn

Not Sighted Onboard

## **INSPECTION COMMENTS**

### **ADDITIONAL COMMENTS**

Overall this Zodiac RIB is in good condition.  
No major structural defects to note.  
Engine running well during inspection.  
Electrics are basic but functional.  
Safety equipment would benefit from an upgrade.

---