



**SEAWORTHY
INSPECTIONS**



Boat Condition Overview

BAO - Boat Condition Overview

3631

Complete

Site conducted	75 Prestige Parade, Wangara WA 6065, Australia
Date of PACR	18.09.2024 10:21 AEST
SWI Reference Number	3631
Location	Power and Sail Wangara WA
Vessel Type	Power Vessel
Vessel Year	2013
Vessel Make and Model	1970 Derben Ocean Ranger - Crafted in Western Australia
Vessel Hull Identification Number (HIN)	AU-TWA020405BL3



Photo 1

Vessel Registration Number

26317 - Sticker suggests registration expiry 06/24.



Photo 2



Photo 3

Engine Make and Model

Evinrude 2-Stroke 140hp



Photo 4



Photo 5

Port/Main Engine Serial Number

No Tag Present

Photos as found



Photo 6



Photo 7



Photo 8



Photo 9



Photo 10



Photo 11



Photo 12

HULL OBSERVATIONS

Construction Material

Fibreglass (GRP)

Main Floor/Deck

Inspected

Satisfactory

Main deck is solid - no flex noted.

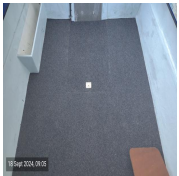


Photo 13



Photo 14



Photo 15

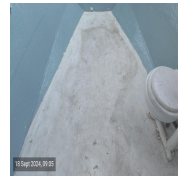


Photo 16

Side and Bow Decks

Inspected

Satisfactory

SIDE and BOW decks are solid - no flex noted.



Photo 17



Photo 18

Seating and Trimming

Inspected

Satisfactory



Photo 19



Photo 20

Fuel Tanks, Fillers, Filters and Hoses

Inspected

Satisfactory

Fuel tank is mounted in FWD v-berth - filler point on FWD deck.

Pre-fuel filter present Starboard Aft.

All visible/accessible fuel components appear in order.

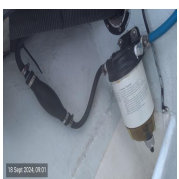


Photo 21

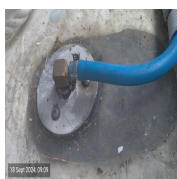


Photo 22



Photo 23



Photo 24

Corrosion or Electrolysis

Not Sighted Onboard

Windscreen and Wipers

Inspected

Fair

Forward facing folding cabin windows are not watertight.
Windscreen framework and glass is in good condition.



Photo 25



Photo 26



Photo 27



Photo 28



Photo 29

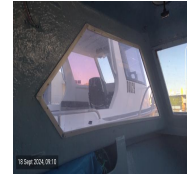


Photo 30



Photo 31



Photo 32

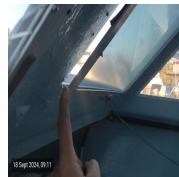


Photo 33



Photo 34

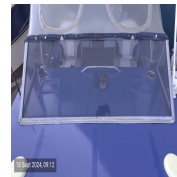


Photo 35

Bimini and Clears

Inspected

Satisfactory

Bimini framework is solid.
Bimini material and clears are okay.



Photo 36



Photo 37



Photo 38



Photo 39



Photo 40

Sea Cocks, Skin Fittings and Hull Penetrations

Inspected

Satisfactory



Photo 41



Photo 42



Photo 43

Doors, Windows, Lockers and Hatches

Inspected

Fair

Small hatches are all DIY constructed and do not secure very well.
Rainwater in hatch below helm floor.



Photo 44



Photo 45



Photo 46



Photo 47

Rub Strip / Rails

Inspected

Satisfactory



Photo 48



Photo 49



Photo 50



Photo 51



Photo 52



Photo 53

Hull Condition Above Waterline

Inspected

Satisfactory

Hull presents well for its age.
Multiple previous spot repairs evident - cosmetic only.



Photo 54



Photo 55



Photo 56



Photo 57



Photo 58

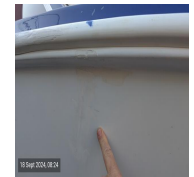


Photo 59



Photo 60



Photo 61

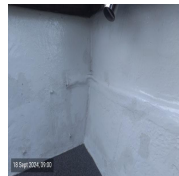


Photo 62



Photo 63



Photo 64



Photo 65

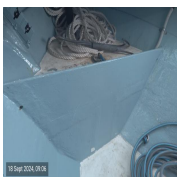


Photo 66



Photo 67

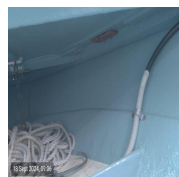


Photo 68



Photo 69



Photo 70

Hull Condition Below Waterline

Inspected

Fair

Underwater areas of hull have multiple scratches, damage and DIY repairs evident - some fiberglass exposed.



Photo 71



Photo 72

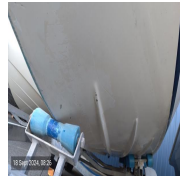


Photo 73



Photo 74



Photo 75



Photo 76



Photo 77



Photo 78



Photo 79



Photo 80



Photo 81



Photo 82



Photo 83



Photo 84



Photo 85



Photo 86



Photo 87



Photo 88



Photo 89



Photo 90

Swim Platform & Ladder

Inspected

Satisfactory

Swimming ladder is fine but does not secure in stowed position.



Photo 91



Photo 92

Transom Condition

Inspected

Fair

Transom is in reasonable condition for its age.
Low to Moderate moisture results.
Outboard engine pod installed to transom, aluminium design and robust.



Photo 93



Photo 94



Photo 95



Photo 96



Photo 97



Photo 98



Photo 99



Photo 100



Photo 101



Photo 102



Photo 103



Photo 104



Photo 105



Photo 106

Images and Video

Hull video link below.

[184cd45a-a506-4c33-adc4-fdb64d8d93eb.mp4](https://www.dropbox.com/s/184cd45a-a506-4c33-adc4-fdb64d8d93eb.mp4?dl=1)

ENGINE OBSERVATIONS

Port/Main Engine Hours

Unknown - no gauge.

Compression Testing Conducted

Yes

Manual or Electronic Testing

Manual Compression Test



Photo 107



Photo 108



Photo 109

Cylinder Compressions (In Order)

Compressions - Cold

- 1 130
- 2 112
- 3 121
- 4 100

Results acceptable and align with the age and use of this engine type

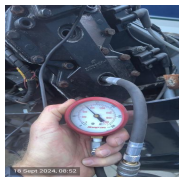


Photo 110



Photo 111

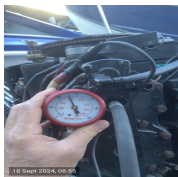


Photo 112



Photo 113

Engine Controls

Tested

Satisfactory



Photo 114



Photo 115



Photo 116

Engine Indication

Not Applicable

No engine gauges fitted.

Engine Oil Visual Inspection

Not Applicable

No oil in 2-stroke engine.

Trim Tabs / Planing / Stabiliser Systems

Inspected

Satisfactory

Planing fin installed on lower gear - good condition.



Photo 117

Engine Cooling System / Tell Tails

Tested

Satisfactory

Cooling water present during run test.



Photo 118

Engine Bay Ventilation (Inboards)

Not Applicable

Gearcase Condition

Inspected

Satisfactory

Lower gear unit presents in good order.



Photo 119



Photo 120

Gearbox Operation

Tested

Satisfactory

Working well throughout gears, smooth selections.

Trim and Tilt Operation and Indication

Tested

Satisfactory

Tilt motor working fine throughout range of motion.



Photo 121



Photo 122



Photo 123

Steering Type

Mechanical

Steering and Rudder System

Tested

Satisfactory

Mechanical steering system working fine - full range working PORT to STB.



Photo 124



Photo 125



Photo 126



Photo 127

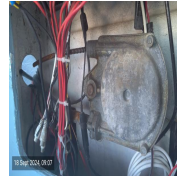


Photo 128

Propeller

Inspected

Satisfactory

3-blade propeller fitted.
Shaft tested as straight.



Photo 129



Photo 130

Engine Mounts

Inspected

Satisfactory



Photo 131



Photo 132

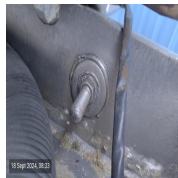


Photo 133



Photo 134

Functional Test Observations

Engine running generally well during test.

This is an old 2-stroke engine and is noisy and smokey, idle RPM is high.

Leaks and Salt Residue

Inspected

Satisfactory

No leaks evident during test.
Some salt residue evident around engine bay and gaskets - unknown source.



Photo 135



Photo 136



Photo 137

Bow Thrusters

Not Applicable

Engine Images and Video

Satisfactory



Photo 138



Photo 139



Photo 140



Photo 141



Photo 142



Photo 143



Photo 144

[321295ab-37c1-4a58-a65a-c39ce41a9f17.mp4](#)

[65cf9f96-0e9b-4390-8414-e6dcc9276754.mp4](#)

ELECTRICAL SYSTEMS OBSERVATIONS

Batteries Fitted

680CCA battery fitted.



Photo 145

Batteries Tested

Yes

Battery tested as GOOD/RECHARGE.



Photo 146

Batteries Adequately Secured

No

Battery is NOT secured down.



Photo 147

Battery Chargers / Solar systems / Shore Power / Generators

Not Applicable

Battery Isolaters and Breakers

Tested

Satisfactory



Photo 148

Boat System Instruments

Satisfactory



Photo 149

Navigation Lights

Tested

Satisfactory



Photo 150



Photo 151



Photo 152

Electrical Wiring Looms and Distribution

Inspected

Fair

Wiring is messy in places - recommend cable management and use of marine grade connectors.

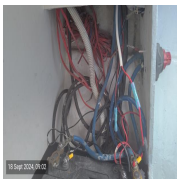


Photo 153



Photo 154



Photo 155



Photo 156

Bilge Pumps and Float Switches

Tested

Satisfactory



Photo 157

Navigational Equipment

Not Applicable

Helm has mounting cradles for 2 x headunits - not present onboard during inspection.



Photo 158



Photo 159

Additional Comfort Items Present

Cabin and Deck Lighting



Single cabin light working.



Photo 160

Entertainment Systems



Stereo and 2 x speakers working.



Photo 161



Photo 162



Photo 163

Toilets, Holding Tanks and Macerator Pumps



Manual flush toilet fitted - unable to test.



Photo 164



Photo 165

Fresh Water Systems Tanks and Pumps



Fresh water tank fitted PORT MIDSHP. Fresh water pump and sink fitted in cabin. System is functional.



Photo 166



Photo 167



Photo 168



Photo 169



Photo 170

ONBOARD EQUIPMENT

Anchor / Chain / Rope

Inspected

Fair

1 x plough anchor fitted at BOW.
2 x rock anchors stored in FWD cabin.
Short length of chain spliced to rope - good condition.
Bitter end is tied around fuel inlet hose - not recommended.



Photo 171



Photo 172



Photo 173



Photo 174



Photo 175



Photo 176



Photo 177

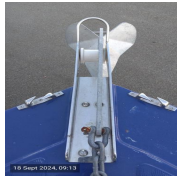


Photo 178



Photo 179

Electric Winch

Not Applicable

VHF Radio

Tested

Satisfactory



Photo 180



Photo 181

EPIRB

Not Present



Photo 182

Horn

Not Sighted Onboard

INSPECTION COMMENTS

ADDITIONAL COMMENTS

Overall, this 50-year-old boat is in reasonable condition for its age.
Hull appears to be structurally intact with no major defects detected.
Engine is an old 2-stroke Evinrude and appears to be running fairly well.
Electrical system is very basic but functional.
Safety equipment is okay but recommend upgrade.
